

Employment pathways – Building relationships with volunteers

Maureen Leahy - Meadows Primary School, VIC



***BUILDING
VOLUNTEER RELATIONSHIPS***

**MEADOWS PRIMARY SCHOOL
- COMMUNITY HUB**

HUME CITY COUNCIL, VICTORIA

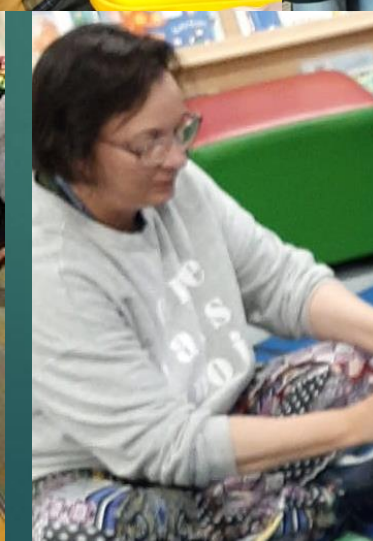
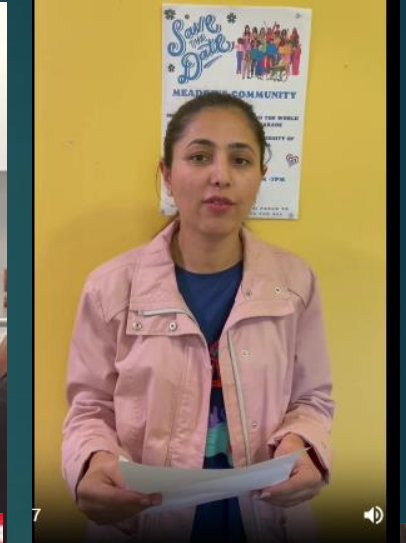
▶ **PRESENTER: HUB LEADER MAUREEN LEAHY**



BUILDING RELATIONSHIPS

Ensuring people feel included is one of the most important roles of a hub leader..

Develop a team approach.
Hub Staff, and local leaders create a friendly
and inclusive environment.



Volunteers

▶ ***“How do we build positive volunteer relationships?”***

▶ ***Create an ethos of respect.***



Develop a team approach to engagement with a genuine interest in developing people at the core.



Find out what they enjoy and what they're good at.



Everyone wants to feel that they have something to contribute.↓



Volunteer pathways support a “Soft entry” to the Hub!



To map our community's needs, parents from the school council and kindergarten staff, joined the Hub's "How Can we Help" initiative.

▶ *CONNECT*
personally.

▶ *ENGAGE* in Hub
initiatives

▶ *SUSTAIN* their
participation



All work needs to be authentic.





Connect:

Show your genuine interest when relating to people.
Ensure everyone feels they belong and are respected.

We can create a culture where everyone feels welcome, whether at the school gate or in the Hub activities.



